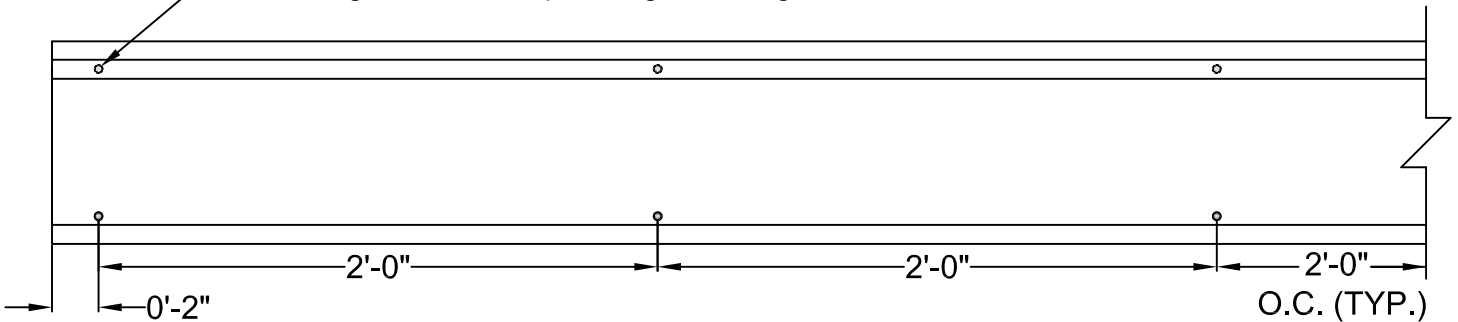


Front View

Use Self Drilling/Self Tapping Screws
 #12 (TYP.)
 Length Varies Depending on Gauge



Side View

NOTES:

Screws are for stability only and are not meant to carry load or create composite action.
 For installation of stiffeners for nested LiteSteel beams, see Detail 09-010.

A - Updated notes and changed required screw type.

- All LiteSteel Beam details are subject to local code provisions
- All components should be selected & installed per the individual component manufacturers' instructions.
- LiteSteel Technologies is not responsible for the performance of components not manufactured by LiteSteel Technologies.



100 Smorgon Way
 Troutville, VA 24175
 Phone : 540-992-1600
 Fax: 540-992-5998
 www.litesteelbeam.com
 sales@litesteelbeam.com

Description:

Nesting

DRAWING NOT TO SCALE

Rev #: A

Rev Date: 02/01/2011

Drawn By: AWN

Checked By: JAM

Dwg #: 09-007

Dwg Date: 03/06/2009

Drawn By: AWN

Checked By: JAM

TEK Screw Table - Steel to LSB

Allowable Loads per Screw (lbs)


Tension			Thickness of Attachment						
			134	118	98	79	59	45	35
	Design	Minimum	127	112	93	75	56	43	33
		Gage	10	11	12	14	16	18	20
Screw		LSB Gage							
	1/4	-134	615				505	395	
		-118	540						
		-098	450						
		-079	365						
		-059	270						
	#12	-134	515			380	295		
		-118	455						
		-098	380						
		-079	305						
		-059	225						
	#10	-134	470			380	295		
		-118	410						
		-098	340						
		-079	275						
		-059	205						

Shear			Thickness of Attachment						
			134	118	98	79	59	45	35
	Design	Minimum	127	112	93	75	56	43	33
		Gage	10	11	12	14	16	18	20
Screw		LSB Gage							
	1/4	-134	860				455	355	
		-118							
		-098							
		-079							
		-059	650						
	#12	-134	665				380	300	
		-118							
		-098							
		-079							
		-059	600						
	#10	-134	465				345	270	
		-118							
		-098							
		-079							
		-059							

NOTES:

1. The maximum load is not to exceed the capacity of the LSB, attachment, or screws.
2. Allowable load values shown are the minimum values based on 2007 AISI NAS for both the connector and the connected material using Buildex TEK screws. Buildex TEK ultimate values can be found in the ITW Buildex 2009 Product Catalog.
3. Values for LSB and hangers 16 ga and thicker are based on members with a minimum yield strength of $F_y = 50\text{ksi}$ and tensile strength of $F_u = 65\text{ksi}$. For hangers or attachments with thickness of 18 ga and thinner values are based on members with a minimum yield strength of $F_y = 33\text{ksi}$ and tensile strength $F_u = 45\text{ksi}$.
4. A minimum of three threads must penetrate each member.

- All LiteSteel Beam details are subject to local code provisions
- All components should be selected & installed per the individual component manufacturers' instructions.
- LiteSteel Technologies is not responsible for the performance of components not manufactured by LiteSteel Technologies.

	100 Smorgon Way Troutville, VA 24175 Phone : 540-992-1600 Fax: 540-992-5998 www.litesteelbeam.com sales@litesteelbeam.com	Description: Screw Chart - Steel to LSB	Rev #: _____ - Rev Date: _____ - Drawn By: _____ - Checked By: _____ -	Dwg #: ATTCH.-1 Dwg Date: 09/16/2009 Drawn By: AWN Checked By: JAM
	DRAWING NOT TO SCALE			