

# LiteSteel™ beam Parallam Comparison Tables

These tables show the applicable LSB and Parallam for various loads from 0 lbs/ft to 2000 lbs/ft for a variety of spans. The tables cover the use of various widths of Parallam. Parallams of 11- 7/8" and 14" depths can be found in the first table, 16" and 18" depths in the second, and all treated Parallams in the third table.

- LSB is compared to iLevel Parallam 2.0E (TJ-9000 February 2011) and iLevel Parallam Plus (TJ-7102 July 2011)
- Comparison is based on total allowable uniform load restricted by L/240
- Parallam has 100% duration factor applied
- LSB bearing capacities have not been taken into consideration. See sections 2.4 and 2.6 for bearing and stiffener requirements
- Reactions should never exceed stiffener capacities for the appropriate bearing length
- All LiteSteel beams are single unless "BB" is shown which indicates two members are required



**LiteSteel Technologies America LLC**

P.O. Box 577

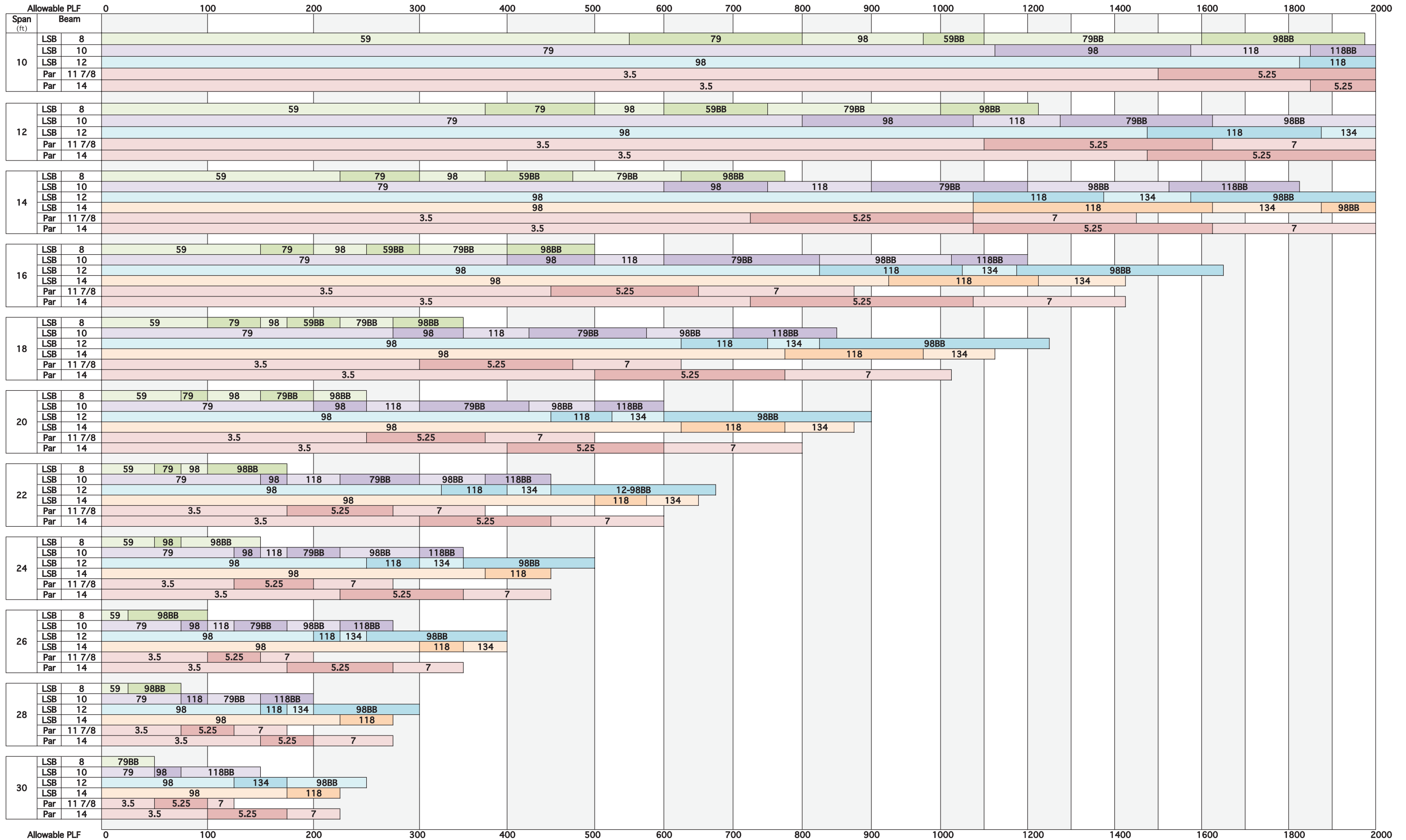
Troutville, VA 24175

Tel: (540) 992-1600

Fax: (540) 992-5998

E-mail: [sales@LiteSteelbeam.com](mailto:sales@LiteSteelbeam.com)

Website: [www.LiteSteelbeam.com](http://www.LiteSteelbeam.com)





Comparison Parallam Plus

Parallam Plus (TJ-7102 August 2009)

